



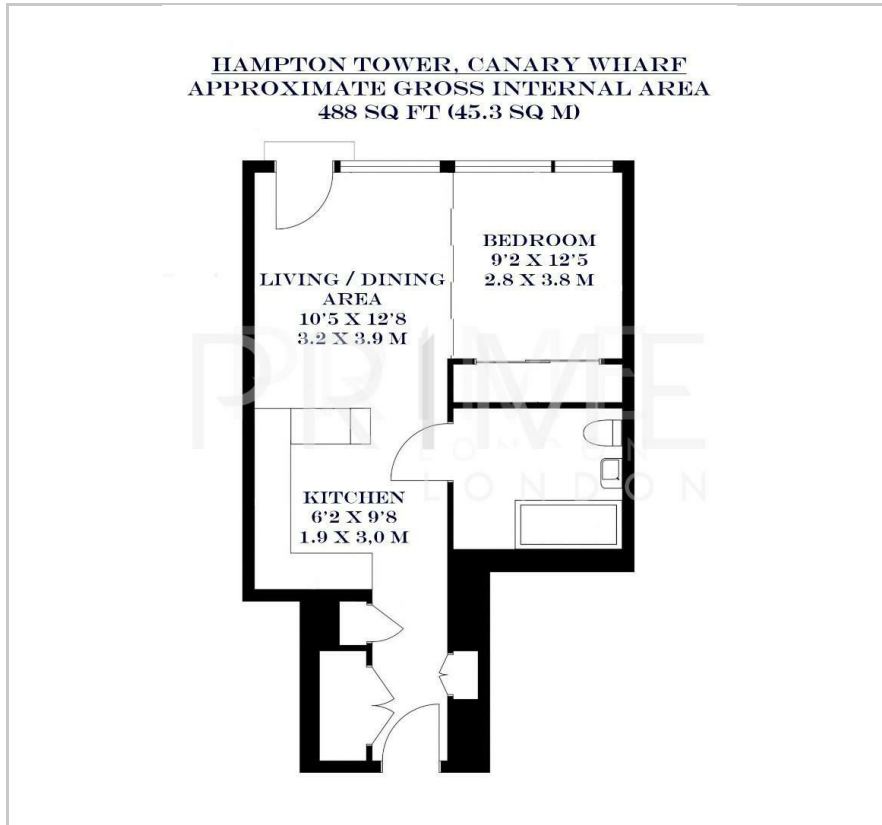
## Hampton Tower

75 Marsh Wall, South Quay Plaza, E14 9GX

Asking Price £600,000



## Floor Plan



## Area Map



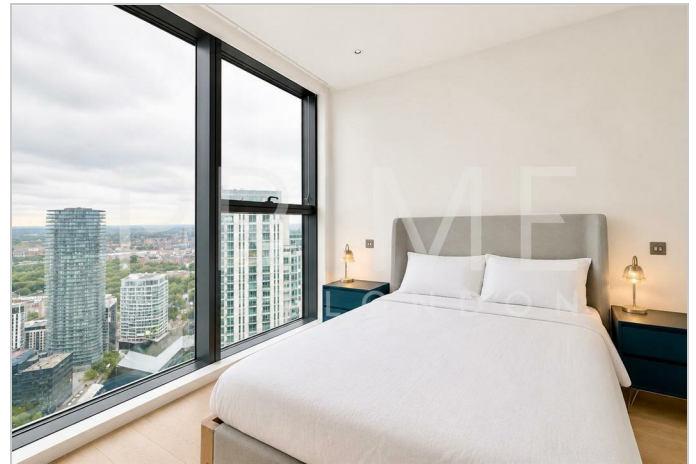
## Energy Efficiency Graph



## Viewing

By appointment. Contact us on 0207 928 6663 if you wish to arrange a viewing appointment for this property, or require further information.

- High floor
- 488 sq ft (45.3 sqm)
- Under floor heating and comfort cooling
- Gym and 20m swimming pool
- 56th floor bar and terrace
- 24 hour concierge



This high floor Manhattan style apartment, set facing South Dock and Canary Wharf within the high-end development South Quay Plaza, is available for chain free sale through Prime London.

The 488 sq ft (45.3 sqm) apartment has large floor to ceiling windows, offering truly stunning views of Canary Wharf, and benefits from having under floor heating and comfort cooling.

Every resident will become exclusive members of The Quay Club, providing 5-star facilities including a state of the art gym, 20m swimming pool overlooking the South Dock, business lounge, screening room and private dining room as well as the stunning 56th floor bar and terrace, offering incredible views of the city skyline.

Located just a few moments from the heart of London's financial district, it will stand within 2.6 acres of beautiful landscaped gardens and over 150 new trees, feeling like an urban oasis. At the heart of the park, new cafes and restaurants will provide places to meet and socialise, all by the water's edge of the South Dock.



These particulars, whilst believed to be accurate are set out as a general outline only for guidance and do not constitute any part of an offer or contract. Intending purchasers should not rely on them as statements of representation of fact, but must satisfy themselves by inspection or otherwise as to their accuracy. No person in this firm's employment has the authority to make or give any representation or warranty in respect of the property.